



Model F15 Metallic

AIR OPERATED DOUBLE DIAPHRAGM PUMPS

Specifications

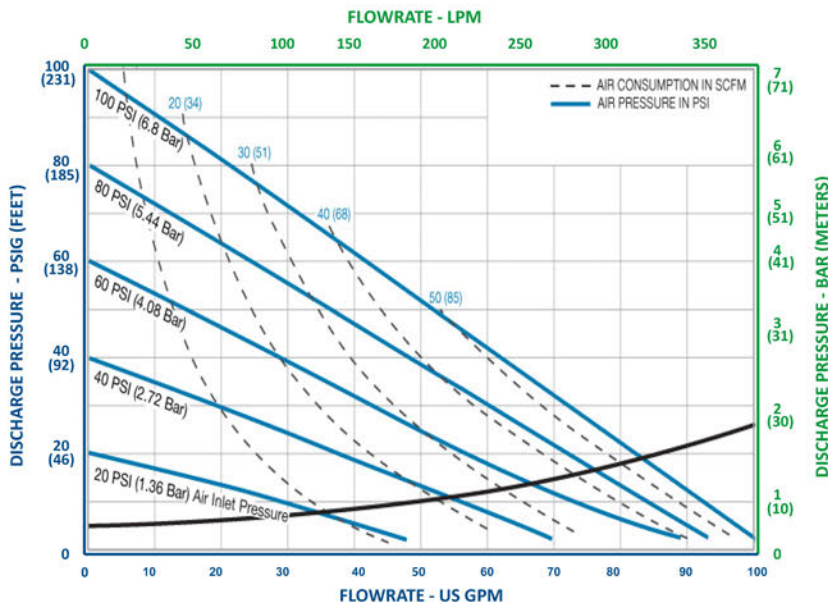
Suction & Discharge Size:	1 1/2" x 1 1/2"
Porting Location:	Center
Connection Types:	NPT
Air Inlet:	3/4" FNPT
Porting Location:	Center
Exhaust port:	1" FNPT, optional
Aluminum Shipping Weight :	53 lbs. (24kg)
Stainless Steel Shipping Weight :	95 lbs. (43 kg)

Capabilities

Maximum Flow Rate:	106 gpm (401 lpm)
Maximum Air Supply Pressure:	100 psi (7 bar)
Displacement Per Stroke:	0.41 gal (1.55 lit)
Minimum Air Inlet Pressure:	10 psig (0.7 bar)
Maximum Particle Size :	0.25 in (6 mm)
Operating temperature:	Determined by elastomers



F15 Performance



Note: Full stroke diaphragm allows performance to be equal for all elastomers.

Typical Applications

- Acids & Bases
- Plating Solutions
- Wastewater
- Paints, Inks, Solvents
- Ceramic Slip and Glaze
- Lubricants and Oils

Typical Industries

- Mining
- Paints and Coatings
- Ceramics
- Pulp and Paper
- Electroplating & Anodizing
- Wastewater
- Marine
- Chemical Manufacturing & Distribution
- OEM's

FTA Pumps

27027 Westheimer Pkwy, Katy, TX
Tel: 713 344 1226



Construction

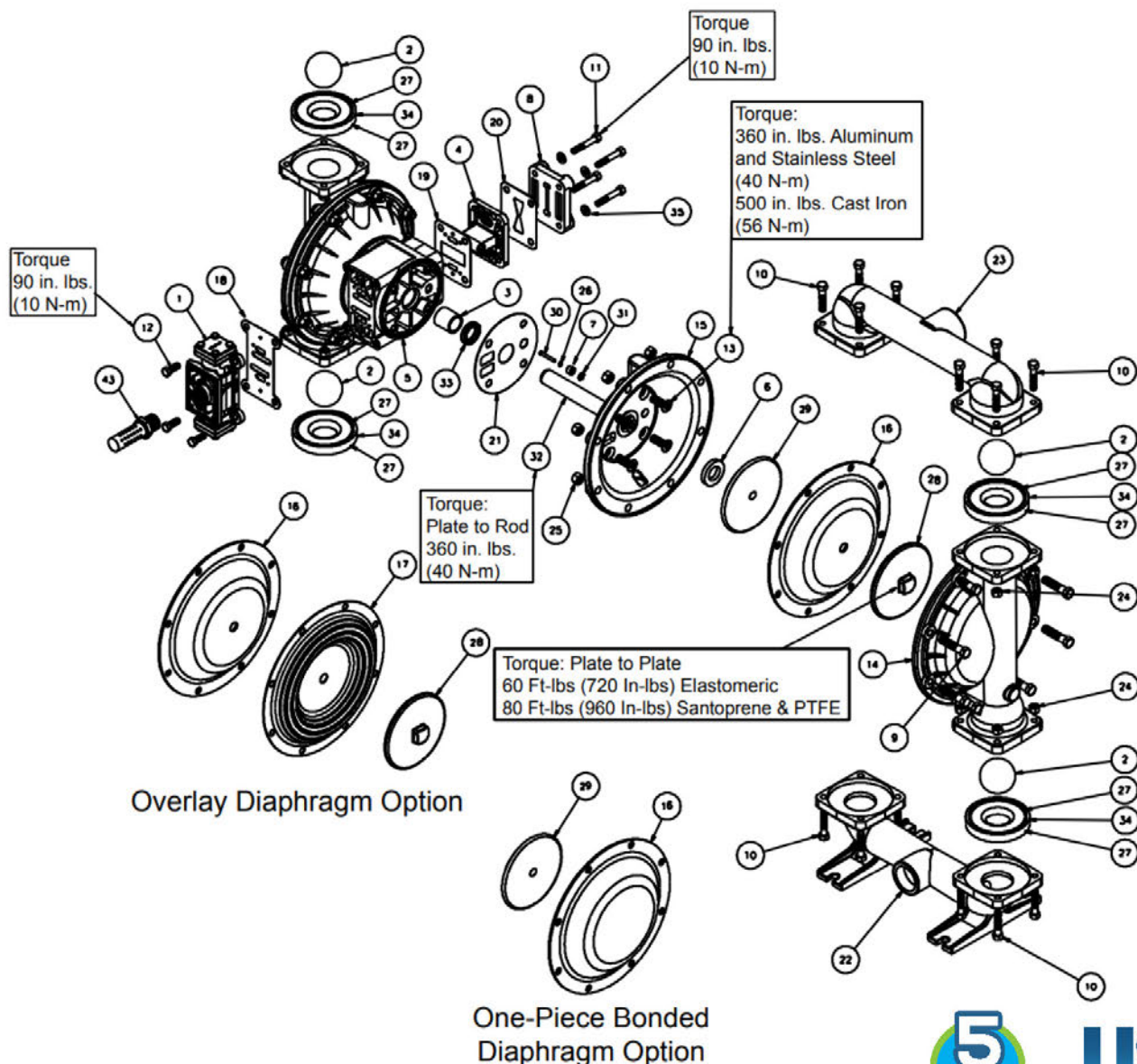
Wetted Materials:	Polypropylene
Diaphragm Materials:	Neoprene, Santoprene™, FKM, EPDM, PTFE, Buna, Hytrel®, Polyurethane
Air Valve:	GFRPP, Aluminum
Ball Materials:	Neoprene, Buna, EPDM, FKM, Santoprene™, PTFE
Seat Materials:	Aluminum, 316SS, PTFE, Hytrel, Buna, Neoprene, EPDM, FKM, Santoprene™, Polyurethane
O-ring Materials:	Neoprene, Buna, EPDM, FKM, PTFE, FEP/FKM

Santoprene™ is a registered trademark of Exxon Mobil Corp.
 Hytrel® is a registered trademark of Dupont™

THE RIGHT CHOICE

Dimensions

Maximum Height:	22.13 in (562.09 mm)
Maximum Width:	16.65 in (422.95 mm)
Maximum Depth:	11.19 in (284.16 mm)



USA

FTA Pumps

27027 Westheimer Pkwy, Katy, TX
 Tel: 713 344 1226

